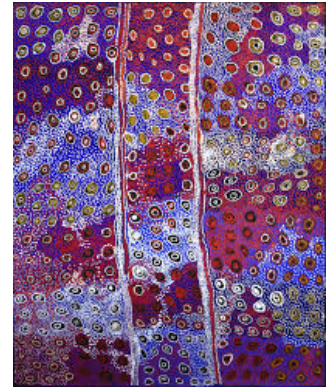


# Short St. Gallery



## Mona Mitakiki Shepherd

Born	1954
Language Group	Arremte/ Pitjantatjarra
Mothers Country	Pintuwiya
Fathers Country	Natajara
Region	APY Lands

Mona started painting with Tjurma Arts and Crafts back in 1998. After a long break she returned to painting at Tjala Arts (formerly Minymaku Arts) in mid 2003. Mona's husband, Michael Mitakiki also painted briefly at the art centre. After the death of her husband in May 2005 Mona changed her surname from Mitakiki to Shepherd for cultural reasons - Pitjantatjarra people are not allowed to see or hear the name of the deceased.

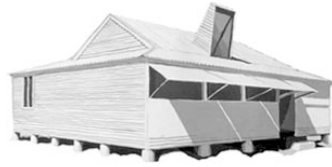
Mona also paints collaborative paintings with Naomi Kanjturiny and Tjimpayi Presley. The ladies were taught to paint by senior artist Kunmanara Katie Kawiny. She has passed away now but the younger women and their grand-daughters carry her story on for future generations.

### Awards

2018 Finalist - 35th Telstra National Indigenous Art Award , NATSIAA MAGNT, Darwin  
1999 Tandanya /Arts SA Aboriginal Artists Fellowship Award

### Collections

NGV, National Gallery of Victoria, Melbourne



# Short St. Gallery

## Group Exhibitions

- 2018 Finalist - 35th Telstra National Indigenous Art Award , NATSIAA MAGNT, Darwin
- 2018 Hahndorf Academy - Ngayuku Ngura
- 2017 Parcous - Gems of the APY land by Aboriginal Signature Estrangin gallery Paris
- 2017 Araluen Galleries - Desert Mob - Collaborative painting
- 2017 Outstation Gallery - Tjala Tjukurpa
- 2017 Charles Darwin University Darwin Festival and Paul Johnstone Gallery - Salon De Refuses - Collaborative painting
- 2017 Art Gallery of New South Wales - The Wynne Prize - Collaborative painting
- 2016 Aboriginal and Pacific Art, Sydney – Seven Sisters
- 2014 Araluen Galleries, Alice Springs - Desert Mob
- 2013 Outstation Gallery Darwin - APY Lands Survey Exhibition 2013
- 2013 Chapman Gallery, Canberra - Tjala Arts: New Work
- 2012 Aboriginal & Pacific Art, Sydney - Tjungu Kutju-tu (Together As One)
- 2012 Metropolis Gallery, Geelong - Paintings from the APY Lands
- 2012 Gallery Gabrielle Pizzi, Melbourne - Tjala
- 2012 Short St Gallery, Broome - One Song Different Tune
- 2012 Outstation Gallery, Darwin - From Home and Returning Home
- 2011 Chapman Gallery, Canberra - Tjala Arts
- 2011 Short St Gallery, Broome
- 2011 ARTKELCH, Germany - Pro Community - Western APY Lands
- 2011 Aboriginal & Pacific Art, Sydney - Ngura wiru mulapa (Beautiful Country)



# Short St. Gallery

2011 Ngayulu Witini ngayuku mamaku tjukurpa, ngayulu witini ngayuku ngunytjuku tjukurpa  
RAFT Artspace

2011 Outstation Gallery, Darwin - Nganampa Kampatjanka Ungutja- Beneath our Canvas

2011 Gallery Gabrielle Pizzi, Melbourne - Emerging Artists from Tjala Arts & Kaltjiti Arts

2010 Outstation Gallery, Darwin - Tjukurpa kunpu nganana kanyini pulka – Our stories, we hold strong

2008 Adelaide Festival Centre - Our Mob

2008 Adelaide Festival Centre - Art Images

2007 Adelaide - Visions of Country: Seymour College art exhibition

2007 Country Arts SA - Our Mob on Tour

2006 Stephanie Burns Fine Art, Canberra - Warka nganampa munuru:

2006 Gallery Gabrielle Pizzi, Melbourne - Wama Yungkunyntja

2006 Red Dot Gallery, Singapore - Utulu kuwaritja Amatala nguru - New mob from Amata

2006 Art Images, Adelaide - Tjala Arts: SALA Festival

2005 Bandigan Art, Sydney - Waku Kunpu: Strong Work

2005 Art Images, Adelaide - Minymaku Arts: SALA Festival

2005 Indigenart, Fremantle - Minymaku Arts: emerging artists from Amata, South Australia

2004 Australias Outback Gallery, Sydney - Bush Christmas

2000 Touring Exhibition; SA Country Arts Trust, South Australia - Tili Wiru (Beautiful Light)

2000 Tandanya, Adelaide - Irititja Munu Kuwaritja Tjukurpa

Various venues across South Australia - Di antara dua pedalaman: between remote regions. A collaborative exhibition featuring artists from remote regions of South Australia and Malaysia

1999 Araluen Galleries, Alice Springs - Desert Mob

1998 Eyre Peninsular - State of the Art Exhibition

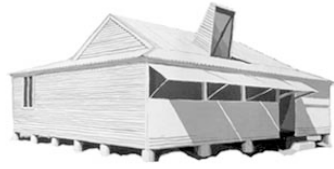
1998 Gallery Gondwana, Alice Springs - Minymaku Batik Exhibition

1998 Eyre Peninsula - EPIC State of the Arts

1991 Beyond Batik - a joint exhibition by members of the ACT Batik Association and artists from the Tjurma Homelands, Canberra

## Bibliography

1998 Lino Printing and Solarplate Etching workshop, SACAT, Adelaide



# Short St. Gallery

1998 Batik Course, Amata TAFE